



ST PETER ST JOAN OF ARC

***Expanding the Foundation
Executive Summary
Survey Results***

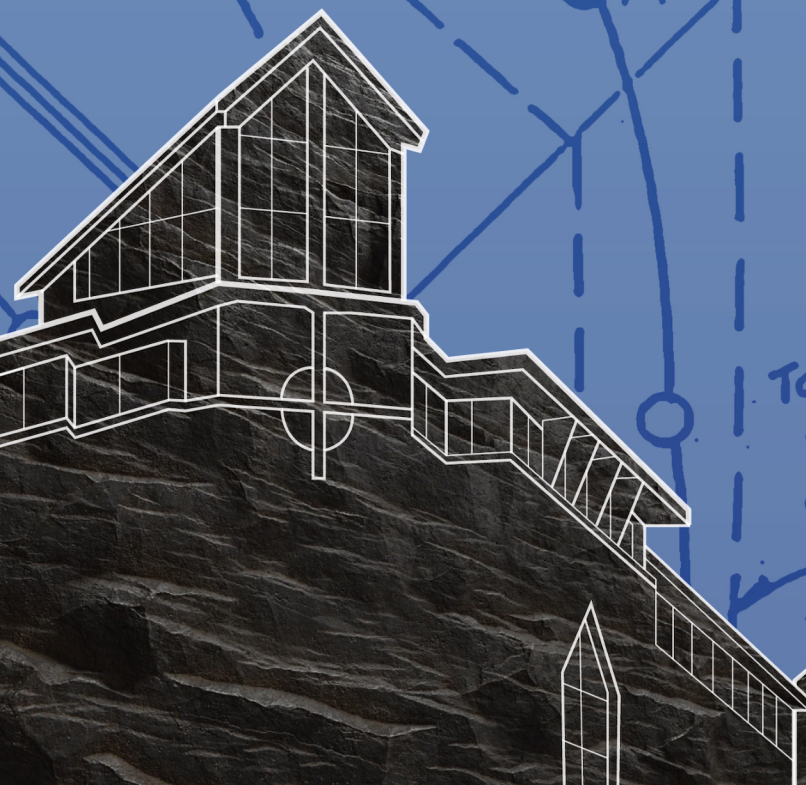


TABLE OF CONTENTS

[In-Brief Summary](#) [02](#)

[Introduction](#) [05](#)

[Survey Demographics](#) [07](#)

[Key Findings and Insights](#) [09](#)

[Conclusions](#) [15](#)

[Appendices](#) [17](#)



IN-BRIEF SUMMARY

The Expanding the Foundation capital campaign, serving Saint Peter Saint Joan of Arc Parish across two campuses, was initiated to address the needs of a rapidly growing community, encompassing numerous ministries, adult and children's faith formation, and overall parish enrichment.

Led by Father David Schalk and the Capital Campaign Committee, a parish-wide survey was conducted in February 2024 to ensure that community feedback guides leadership decisions. The survey, receiving over 820 participants, focused on capital project priorities, current facility limitations and benefits, and overall facility adequacy. Through diverse outreach methods, including electronic and paper surveys announced via various channels, the committee collected and analyzed data to inform the campaign's next steps.

The participant demographics highlight a diverse representation of those who submitted the survey, notably with a concentration of individuals aged 51 and above. Parish attendance patterns varied, with Saint Joan of Arc's Sunday 10 AM Mass drawing the highest attendance (23.1%), followed by Saint Peter's Sunday 9 AM Mass (11.5%). Tenure within the parish ranged widely, from 1 to 52 years, suggesting a mix of long-standing and newer members contributing to the parish community.

Key findings and insights from the survey responses provide an understanding of how the parish community prioritized various capital projects and how the current church facilities are limiting or benefiting their ability to celebrate the sacraments, build community, and grow spiritually.



The top priorities identified include the need for a Parish Event Center capable of accommodating 300+ attendees with a kitchen, dedicated Youth Ministry Space, Enhanced Worship Space, and the need for a School Building and New/Enhanced sports/gym space. These priorities underscore the parish's multifaceted needs, emphasizing the importance of creating spaces that cater to various aspects of community life.

Additionally, participants provided feedback on other aspects of parish life such as liturgical practices, and community-building events, suggesting areas for further consideration and improvement. Additionally, there were many responses mentioning the sound system and acoustics of the church facilities.

The Facility Report Card provides a clear assessment of how well facilities are meeting parishioners' needs, with Saint Joan's Parking Lot and Saint Peter's Adoration Chapel receiving notable grades. Areas of limitation include the Saint Peter's Parking Lot, Storage, and Room Furniture; Saint Joan of Arc shows limitations with the Meeting Rooms, their Availability, Bathrooms, Kitchen Facilities, and Storage areas.

The report also identifies limitations in areas such as space constraints, youth engagement, and worship space improvements, reflecting a diverse set of concerns within the parish community.

Moving forward, the next steps for the Capital Campaign involve selecting an architect, initiating master planning, conducting a feasibility study, obtaining Diocesan approval, and launching the campaign to rally support from the parish community for the proposed initiatives. These strategic actions aim to translate survey findings into tangible plans for the future, ensuring that the parish's facilities align with its mission and vision while addressing the diverse needs of the community.



INTRODUCTION

Mission and Vision

The Expanding the Foundation capital campaign supports the needs of the Saint Peter Saint Joan of Arc Parish spanning two campuses. To understand the needs of the rapidly growing parish, accommodate the numerous ministries, nurture faith formation for adults and children, and enrich parish life, the Capital Campaign Committee constructed and conducted a parish-wide survey. By engaging all parishioners in a comprehensive survey, the Committee sought to gather valuable feedback, ensuring parish leadership, headed by Father David Schalk, is guided by the collective voice of the community. With this feedback, Father Schalk and the Committee will articulate a path moving forward with a master plan for new construction and improvements that reflect the current and long-term needs and priorities of the parish community.

The Expanding the Foundation Campaign is not merely about physical construction but about nurturing spiritual growth and communal bonds within the parish. Through this campaign, the aim is to maintain and enhance the existing facilities, while also laying the groundwork for future expansion and development. By harnessing the insights gleaned from the parish-wide survey, the Committee aspires to create spaces that foster fellowship, learning, and service, enriching the lives of all who call Saint Peter Saint Joan of Arc their spiritual home. This work will build a foundation that sustains the parish community for generations to come, rooted in the four C's - Community, Communion, Care for the Poor, and "Come and See".



The goal of this Executive Summary is to provide a comprehensive, yet succinct overview of the parish-wide survey results conducted in February 2024 by the Capital Campaign Committee. It aims to elaborate on the previously published one-page infographic, highlighting key points and trends from the survey, and outline the next steps to engage and inform the community, fostering transparency, collaboration, and collective ownership.

Methodology

The Expanding the Foundation Committee conducted a survey in February 2024 for parishioners to make their voices heard regarding three key topics:

- What capital projects should be considered for a feasibility study and their relative priority?
- How the existing church facilities are limiting or benefiting parishioners' ability to celebrate the sacraments, build community, and grow spiritually.
- How well certain aspects of the facility are meeting current needs.

The survey was available to all Saint Peter Saint Joan of Arc parishioners and parishioners as either an electronic form or a paper half-page form. The survey was announced via Flocknote communications, parish bulletins, and pulpit announcements by Committee members and clergy.

Data was collected on an ongoing basis through February and collated into Excel Spreadsheet for analysis by Committee members.

As part of the survey, parishioners not only provided feedback about the three key topics but also shared demographic information and indicated if they wanted to follow up with a Committee member. The Committee reached out to these parishioners and the additional feedback provided was used to enhance the survey results and context.

Over 820 survey results were submitted, and the data was analyzed to provide the information in this summary. The data is available in the appendix for review if desired.



SURVEY DEMOGRAPHICS

Overview of Participants

In order to provide context for the survey data and results, it's crucial to understand the survey participation demographic composition.

Across various age groups, respondents showcased a diverse representation, with a notable concentration of individuals aged 51 and above, indicating a predominantly mature demographic profile. The majority of respondents are 65 and above (40.3%), closely followed by those within the 51-64 age bracket (29.3%). Middle-aged adults between 36-50 (23.3%) also represented a significant portion of the surveyed population. Those 35 years and younger accounted for 7.2% of participants.

Regarding marital status, the majority of participants were married (80.9%), while single individuals constituted a smaller proportion (6.5%). Divorced and widowed individuals made up 6.2% and 6.4% of respondents, respectively.

The survey also revealed that the tenure within the parish varied widely among respondents, indicating a mix of long-standing and newer members, with participants reporting years of membership ranging from 1 to 52.

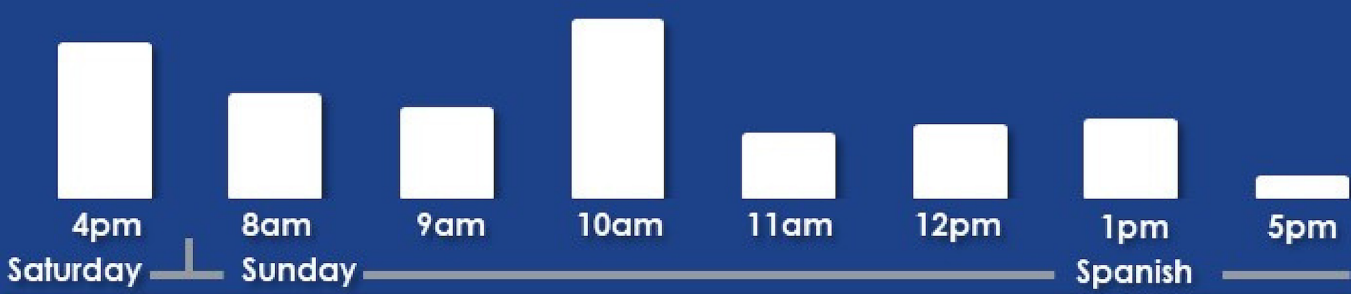
Parish attendance patterns revealed differing levels of survey engagement across Masses, with the highest participation at Saint Peter being the Sunday 9 AM Mass (11.5%) and at Saint Joan of Arc being the Sunday 10 AM Mass (23.1%).



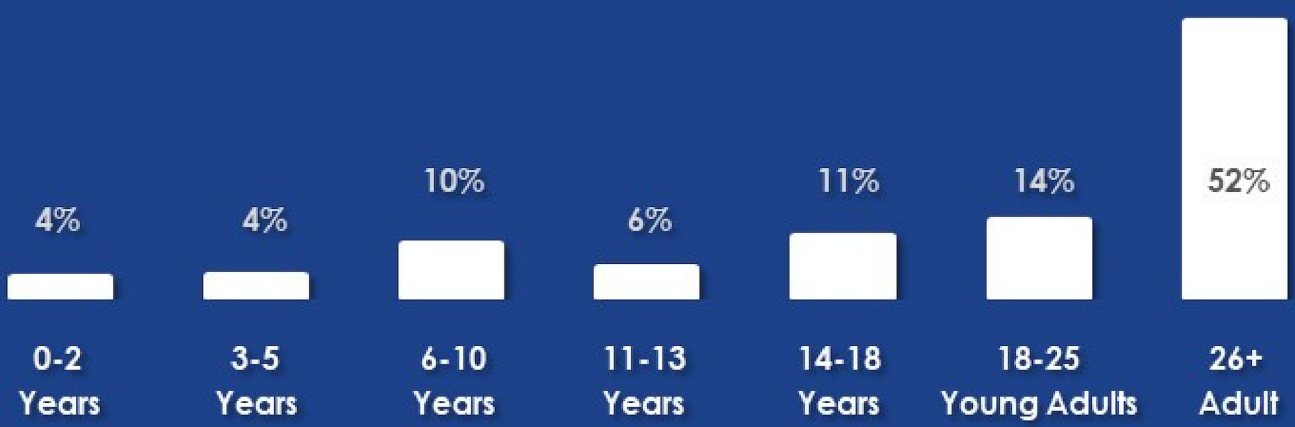
Family composition data illustrated a mix of households with children across different age groups, with a notable presence of children in the young adult (under 25) category (14.3%) and adults with children (51.1%).

These demographic insights aim to establish transparency regarding the survey participants, providing a comprehensive understanding of the survey participant’s composition.

Demographic data can be found in [Appendix B](#).



Weekend Mass Attendance



Data note: number of parishioners with no children was not collected

Family Details – Age of Children

KEY FINDINGS AND INSIGHTS

Summary of Survey Responses

Upon further analysis, survey responses revealed the top priorities for facility improvements within the parish community.

1. Parish Event Center

Topping the list is the need for a parish event center capable of accommodating 300+ attendees, complete with an industrial kitchen facility.

2. Dedicated Youth Space & Enhanced Worship Space

Following closely behind are priorities for a dedicated youth ministry space and enhanced worship areas, reflecting the congregation's focus on fostering community engagement and spiritual growth.

3. School Building & Sports/Gym

Additionally, there is interest in investing in education infrastructure and community building, as evidenced by the desire for a K-8 building and improved sports/gym facilities for recreation opportunities for all ages.

These responses underscore the multifaceted needs of the parish, highlighting a desire to create spaces that cater to various aspects of community life, from worship and education to recreation and fellowship.

In addition to the highlighted facility priorities, participants provided valuable feedback on other aspects of parish life that may appear out-of-scope initially. However, these insights both support the identified capital improvement trends and shed light on areas that will be addressed by the pastor and staff. The additional input not only underscores the significance of the identified facility needs but also prompts important questions and areas for consideration.



Key areas of consideration include:

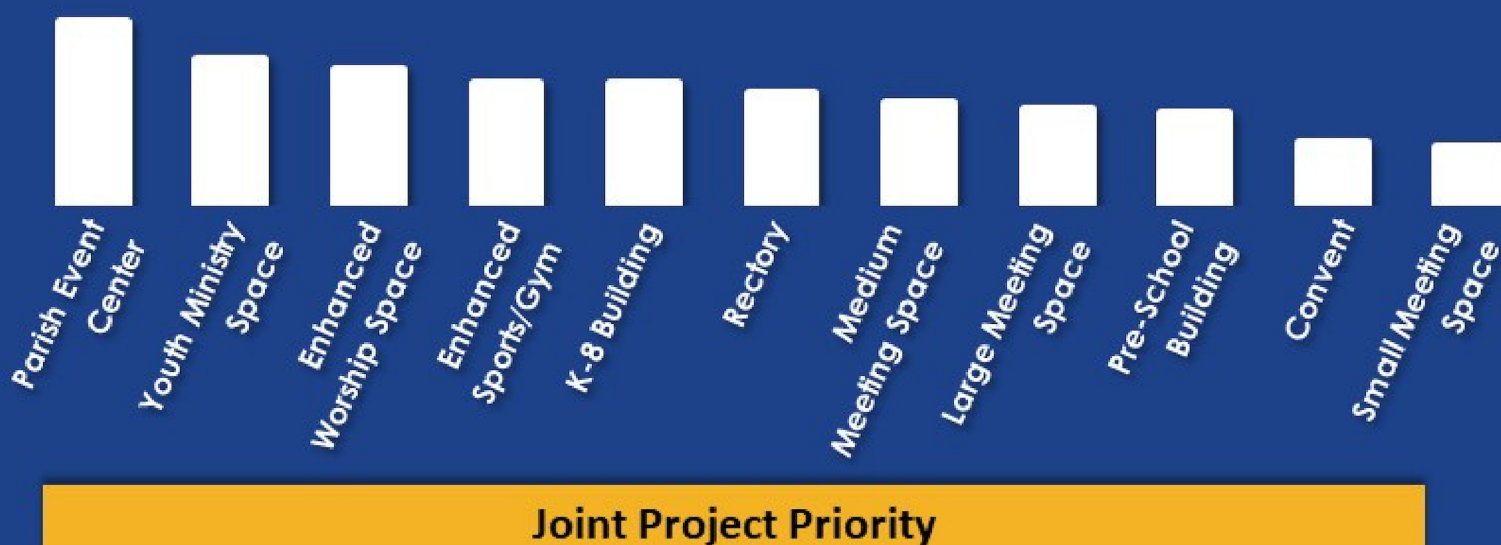
- speech intelligibility of the sound system
- sacred music, liturgical practices, enhancements, and
- community-building events for all age groups

These supplementary responses highlight the broader spectrum of concerns within the parish community, underscoring the need for a comprehensive approach to address various facets of worship, community engagement, and infrastructure development.

Trends and Patterns Identified

1 Facility Priorities

The Facility Priorities provides the participant preferences for various construction and improvement projects within Saint Peter Saint Joan of Arc Parish.



The survey offered parishioners a list of 11 projects to rank, with an opportunity to propose additional projects. Participants in the paper survey could rank projects from 1 to 12, while those in the online survey were prompted to select their top 3 priority projects. Additionally, parishioners could rank projects individually for each campus at Saint Peter and Saint Joan of Arc.

The survey yielded widespread parish support for several top priority projects among parishioners, with the Parish Event Center, Youth Ministry Space, and Enhanced Worship Space emerging as the top three priorities, garnering the highest number of votes. A new/enhanced Sports/Gym Space and K-8 School Building received notable support as well. The remaining suggested projects and participant suggestions received support as well, although ranked lower in comparison to the top five articulated priorities.

Moving forward, these project rankings, in conjunction with any additional suggestions from parishioners, will guide the focus of the feasibility study as the parish advances towards the launch of a joint capital campaign, addressing the identified needs and priorities comprehensively.

2 Facility Report Card

The Facility Report Card provides an assessment of how well various facilities at each campus of Saint Peter Saint Joan of Arc Parish are currently meeting the needs of parishioners. To gauge this, a rating scale ranging from 1 (indicating needs improvement) to 5 (indicating exceeds expectations) was utilized.



To offer a clear representation of the facilities' performance, these ratings were converted into "grades" by assigning corresponding numerical scores: a rating of 5 was assigned a score of 100, a rating of 4 received a score of 90, and so on. These scores were then averaged to calculate the overall grade percentage for each facility, providing a concise and easily understandable snapshot of their current state. This approach was used to depict the areas of strength and areas that may require attention or improvement as articulated by survey participants at a glance.

St Peter St Joan of Arc Facility Report Card

Facility Item	St Peter	St Joan of Arc
Sanctuary	B+	B
Adoration Chapel	A	B+
Church Office	B	B
Bathrooms	B	C+
Kitchen	B	C+
McEwan/Social Hall	B	B
Storage Areas	C+	C+
Parking Lot	C+	A
ADA Accessibility	B	B+
Meeting Room Availability	B	C+
Meeting Room Size	B	C+
Meeting Room Furniture/Tech	C+	C

Detailed information and feedback on each graded facility area can be found in [Appendix C](#).



3 Facility Limitations

A short answer section in the survey asked participants to describe how the existing facilities are limiting or benefiting their ability to celebrate the sacraments, build community, and grow spiritually.

Based on the survey replies the four most common themes regarding how existing church facilities are limiting or benefiting someone's ability to celebrate the sacraments, build community, and grow spiritually at Saint Peter Saint Joan of Arc Parish are:

Community

Enhanced Community Building: Many respondents highlighted the importance of community-building activities and the need for more and better-equipped meeting spaces for various groups and ministries. Issues related to scheduling conflicts, limited meeting room availability, and challenges in organizing community events were mentioned.

Space

Space Constraints and Crowding: Many respondents mentioned challenges related to space limitations, especially during Mass times, holidays, events, and gatherings. Specific issues include crowded Masses, limited seating, the need for larger spaces for various activities, and traffic assistance after Mass.



Young People

Youth and Young Adult Engagement: There is a strong emphasis on the need to engage and accommodate young people, including children, high school students, and young adults. Suggestions include providing recreational opportunities, and outdoor activities, and creating spaces specifically for youth activities.

Sanctuary

Improvements in Worship Spaces: Respondents expressed a desire for more beautiful and reverent worship spaces, including elements such as more sacred art, communion kneelers, confessionals, and hymnals. Acoustic issues, sound system limitations, and suggestions for enhancing the aesthetics of worship spaces were commonly mentioned.

ADA Access

Improvements to ADA Accessibility: Common issues mentioned were improving the location and space of ADA sanctuary seating, adding more parking spaces, improving the restrooms for accessibility, and improving door access.

These themes reflect a diverse set of concerns, ranging from practical issues like space constraints to broader considerations such as fostering community engagement and inclusivity in the church environment.

The other limitations and project ideas can be found in [Appendix D](#).



CONCLUSIONS

Next Steps for the Capital Campaign

The next steps in the capital campaign involve a series of strategic actions aimed at translating survey findings into tangible plans for the future of the parish.

First and foremost, the Capital Campaign Committee will embark on the architect selection process. This crucial step involves identifying and selecting an architectural firm with the expertise and vision to translate the parish's needs and priorities into a comprehensive, long-term master plan.

Following the selection of the architect, the Committee will collaborate closely with the architect to initiate the master planning phase. This stage entails in-depth discussions, assessments, and design considerations to conceptualize the proposed construction and improvements. Through careful deliberation and community input, the master plan will outline the layout, functionality, and aesthetics of the new facilities, ensuring they align with the parish's mission and vision.

Simultaneously, a feasibility study will be conducted to assess the financial viability and sustainability of the proposed capital campaign initiatives. This study will evaluate the parish's fundraising capacity, donor potential, and overall financial health to determine the feasibility of achieving the campaign's goals. The findings of this study will inform strategic decision-making and resource allocation moving forward.



Upon completion of the master planning and feasibility study phases, the proposed plans will undergo review and approval by the Diocese of Columbus. This crucial step ensures alignment with diocesan guidelines, regulations, and standards, validating the parish's commitment to responsible stewardship and compliance with governing authorities.

Finally, with Diocesan approval secured, the Committee will launch the new campaign, rallying parishioners and stakeholders to support the vision and objectives outlined in the master plan. This phase will involve comprehensive outreach, communication, and fundraising efforts to garner enthusiasm, participation, and financial support from the entire parish community.

In essence, these sequential steps represent a strategic and collaborative approach to advancing the Expanding the Foundation capital campaign, laying the groundwork for the realization of the parish's short and long-term goals and aspirations.



APPENDICES

A. Survey Form



We are seeking the input of ALL parishioners about maintaining and Expanding the Foundation and Facilities at our Parish.

Online Survey Available
Scan the QR code or go to bit.ly/spsjoaet24 to fill out this survey online.

Your input is greatly needed and appreciated by Feb. 29th

Prioritize the projects below to expand our Parish.
Write in a number to rank the projects 1:highest – 12:lowest for each campus

St. Peter	Project	St. Joan of Arc
	Enhanced Worship Space	
	Convent on property	
	New/Improved Rectory on property	
	Parish Event Center (300+ with Kitchen)	
	More Large Meeting Spaces (30+ seats)	
	More Medium Meeting Spaces (15-30)	
	More Small Meeting Spaces (<15)	
	Pre-School Building	
	K-8 School Building	
	Dedicated Youth Ministry Space	
	New/Improved Sports/Gym Space	
	Other:	

How are the existing church facilities limiting or benefiting your ability to celebrate the sacraments, build community, and grow spiritually?

Flip Over for additional questions please



Estamos buscando la opinión de TODOS los feligreses sobre el mantenimiento y la expansión de la fundación y las instalaciones en nuestra parroquia.

Encuesta en línea disponible
Escanea el código QR o ve a bit.ly/spsjoaef34 para completar esta encuesta en línea.

Su opinión es muy necesaria y apreciada antes del 29 de febrero

Priorice los proyectos a continuación para expandir nuestra parroquia.
Escriba un número para clasificar los proyectos comenzando con el número 1 y el 12 como menor nivel para cada iglesia

San Pedro	Proyecto	Santa Juana de Arco
	Espacio de adoración mejorado	
	Convento en propiedad	
	Rectoria nueva/mejorada en la propiedad	
	Centro de Eventos Parroquial (300+ con Cocina)	
	Más espacios para reuniones grandes (30+ asientos)	
	Más espacios para reuniones medianas (15-30)	
	Más espacios para pequeñas reuniones (<15)	
	Edificio de Preescolar	
	Edificio de la escuela K-8	
	Espacio dedicado a la Pastoral Juvenil	
	Espacio nuevo/mejorado para deportes/gimnasio	
	Otro:	

¿De qué manera las instalaciones existentes están limitando o beneficiando su capacidad para celebrar los sacramentos, construir una comunidad y crecer espiritualmente?

Dale la vuelta a la hoja para preguntas adicionales, por favor

As a parishioner, how well are the following meeting your needs:
Rate on a 1-5 Scale. 1 = Needs Improvement | 5 = Exceeds Expectations
Leave Blank if N/A

	St. Peter					St. Joan Of Arc				
	1	2	3	4	5	1	2	3	4	5
Sanctuary	<input type="radio"/>	<input type="radio"/>	<input type="radio"/>	<input type="radio"/>	<input type="radio"/>	<input type="radio"/>	<input type="radio"/>	<input type="radio"/>	<input type="radio"/>	<input type="radio"/>
Adoration Chapel	<input type="radio"/>	<input type="radio"/>	<input type="radio"/>	<input type="radio"/>	<input type="radio"/>	<input type="radio"/>	<input type="radio"/>	<input type="radio"/>	<input type="radio"/>	<input type="radio"/>
Church Office Facilities	<input type="radio"/>	<input type="radio"/>	<input type="radio"/>	<input type="radio"/>	<input type="radio"/>	<input type="radio"/>	<input type="radio"/>	<input type="radio"/>	<input type="radio"/>	<input type="radio"/>
Bathrooms	<input type="radio"/>	<input type="radio"/>	<input type="radio"/>	<input type="radio"/>	<input type="radio"/>	<input type="radio"/>	<input type="radio"/>	<input type="radio"/>	<input type="radio"/>	<input type="radio"/>
Kitchen Facilities	<input type="radio"/>	<input type="radio"/>	<input type="radio"/>	<input type="radio"/>	<input type="radio"/>	<input type="radio"/>	<input type="radio"/>	<input type="radio"/>	<input type="radio"/>	<input type="radio"/>
McEwan Center / Social Hall	<input type="radio"/>	<input type="radio"/>	<input type="radio"/>	<input type="radio"/>	<input type="radio"/>	<input type="radio"/>	<input type="radio"/>	<input type="radio"/>	<input type="radio"/>	<input type="radio"/>
Storage Areas	<input type="radio"/>	<input type="radio"/>	<input type="radio"/>	<input type="radio"/>	<input type="radio"/>	<input type="radio"/>	<input type="radio"/>	<input type="radio"/>	<input type="radio"/>	<input type="radio"/>
Parking Lot	<input type="radio"/>	<input type="radio"/>	<input type="radio"/>	<input type="radio"/>	<input type="radio"/>	<input type="radio"/>	<input type="radio"/>	<input type="radio"/>	<input type="radio"/>	<input type="radio"/>
ADA Accessibility	<input type="radio"/>	<input type="radio"/>	<input type="radio"/>	<input type="radio"/>	<input type="radio"/>	<input type="radio"/>	<input type="radio"/>	<input type="radio"/>	<input type="radio"/>	<input type="radio"/>
Classrooms / Meetings Rooms										
Availability	<input type="radio"/>	<input type="radio"/>	<input type="radio"/>	<input type="radio"/>	<input type="radio"/>	<input type="radio"/>	<input type="radio"/>	<input type="radio"/>	<input type="radio"/>	<input type="radio"/>
Size / Capacity	<input type="radio"/>	<input type="radio"/>	<input type="radio"/>	<input type="radio"/>	<input type="radio"/>	<input type="radio"/>	<input type="radio"/>	<input type="radio"/>	<input type="radio"/>	<input type="radio"/>
Technology / Furniture	<input type="radio"/>	<input type="radio"/>	<input type="radio"/>	<input type="radio"/>	<input type="radio"/>	<input type="radio"/>	<input type="radio"/>	<input type="radio"/>	<input type="radio"/>	<input type="radio"/>
Other	<input type="radio"/>	<input type="radio"/>	<input type="radio"/>	<input type="radio"/>	<input type="radio"/>	<input type="radio"/>	<input type="radio"/>	<input type="radio"/>	<input type="radio"/>	<input type="radio"/>

If you would like a follow up conversation with a member of the Expanding the Foundation Committee provide your contact info:

Name: _____ Email/Phone _____

Demographic Questions:

I have been a parishioner for _____ years at _____
What campus and Time do you typically attend Mass?

St. Peter St. Joan of Arc Mass

Age: 18 or under 19-25 26-35 36-50 51-64 65+

What is your marital status:

Single Married Divorced/Separated Widowed

If you have children what are their ages: _____

Do you have children attending: CAFFE PSR Damascus

Catholic School Other: _____

What Ministries are you active in: _____

Please complete this survey by Feb. 29th Thank You for providing input!

Como feligrés, ¿qué tan bien satisfacen sus necesidades lo siguiente?

Califica en una escala del 1 al 5. Déjelo en blanco si N/A
1 = Necesita mejorar
5 = Supera las expectativas

	San Pedro					Santa Juana de Arco				
	1	2	3	4	5	1	2	3	4	5
Santuario	<input type="radio"/>	<input type="radio"/>	<input type="radio"/>	<input type="radio"/>	<input type="radio"/>	<input type="radio"/>	<input type="radio"/>	<input type="radio"/>	<input type="radio"/>	<input type="radio"/>
Capilla de la Adoración	<input type="radio"/>	<input type="radio"/>	<input type="radio"/>	<input type="radio"/>	<input type="radio"/>	<input type="radio"/>	<input type="radio"/>	<input type="radio"/>	<input type="radio"/>	<input type="radio"/>
Instalaciones de la oficina de la iglesia	<input type="radio"/>	<input type="radio"/>	<input type="radio"/>	<input type="radio"/>	<input type="radio"/>	<input type="radio"/>	<input type="radio"/>	<input type="radio"/>	<input type="radio"/>	<input type="radio"/>
Baños	<input type="radio"/>	<input type="radio"/>	<input type="radio"/>	<input type="radio"/>	<input type="radio"/>	<input type="radio"/>	<input type="radio"/>	<input type="radio"/>	<input type="radio"/>	<input type="radio"/>
Instalaciones de cocina	<input type="radio"/>	<input type="radio"/>	<input type="radio"/>	<input type="radio"/>	<input type="radio"/>	<input type="radio"/>	<input type="radio"/>	<input type="radio"/>	<input type="radio"/>	<input type="radio"/>
Centro McEwan / Salón Social	<input type="radio"/>	<input type="radio"/>	<input type="radio"/>	<input type="radio"/>	<input type="radio"/>	<input type="radio"/>	<input type="radio"/>	<input type="radio"/>	<input type="radio"/>	<input type="radio"/>
Áreas de almacenamiento	<input type="radio"/>	<input type="radio"/>	<input type="radio"/>	<input type="radio"/>	<input type="radio"/>	<input type="radio"/>	<input type="radio"/>	<input type="radio"/>	<input type="radio"/>	<input type="radio"/>
Estacionamiento	<input type="radio"/>	<input type="radio"/>	<input type="radio"/>	<input type="radio"/>	<input type="radio"/>	<input type="radio"/>	<input type="radio"/>	<input type="radio"/>	<input type="radio"/>	<input type="radio"/>
Accesibilidad para discapacitados	<input type="radio"/>	<input type="radio"/>	<input type="radio"/>	<input type="radio"/>	<input type="radio"/>	<input type="radio"/>	<input type="radio"/>	<input type="radio"/>	<input type="radio"/>	<input type="radio"/>
Aulas / Salas de Reuniones										
Disponibilidad	<input type="radio"/>	<input type="radio"/>	<input type="radio"/>	<input type="radio"/>	<input type="radio"/>	<input type="radio"/>	<input type="radio"/>	<input type="radio"/>	<input type="radio"/>	<input type="radio"/>
Tamaño / Capacidad	<input type="radio"/>	<input type="radio"/>	<input type="radio"/>	<input type="radio"/>	<input type="radio"/>	<input type="radio"/>	<input type="radio"/>	<input type="radio"/>	<input type="radio"/>	<input type="radio"/>
Tecnología / Mobiliario	<input type="radio"/>	<input type="radio"/>	<input type="radio"/>	<input type="radio"/>	<input type="radio"/>	<input type="radio"/>	<input type="radio"/>	<input type="radio"/>	<input type="radio"/>	<input type="radio"/>
Otro	<input type="radio"/>	<input type="radio"/>	<input type="radio"/>	<input type="radio"/>	<input type="radio"/>	<input type="radio"/>	<input type="radio"/>	<input type="radio"/>	<input type="radio"/>	<input type="radio"/>

Si desea una conversación de seguimiento con un miembro del Comité de Expansión de la Fundación, proporcione su información de contacto:
Nombre: _____ Correo electrónico/teléfono _____

Cuestiones demográficas:

He sido feligrés durante _____ años en _____

¿A qué iglesia y a qué hora suele asistir a misa?

San Pedro Santa Juana de Arco Horario de misa _____

Edad: 18 o menos 19-25 26-35 36-50 51-64 65+

¿Cuál es su estado civil?

Soltero Casado Divorciado/Separado Viudo

Si tiene hijos, ¿cuáles son sus edades?: _____

¿Tiene niños que asisten? CAFFE PSR Damascus

Escuela Católica Otro: _____

¿En qué ministerios está activo?: _____

Complete esta encuesta antes del 29 de febrero ¡Gracias por darnos su opinión!



B. Participant Demographic Data

Age

Under 18	4	0.5%
19-25	9	1.2%
26-35	42	5.5%
36-50	179	23.3%
51-64	225	29.3%
65+	310	40.3%

Marital Status

Single	- 51 (6.5%)
Married	- 631 (80.9%)
Divorced	- 48 (6.2%)
Widowed	- 50 (6.4%)

Family Details

Kids 0-2	- 41 (3.7%)
Kids 3-5	- 45 (4.0%)
Kids 6-10	- 111 (10.0%)
Kids 11-13	- 61 (5.5%)
Kids 14-18	- 127 (11.4%)
Young Adult (under 25)	- 159 (14.3%)
Adult Children	- 568 (51.1%)

Parish Attendance

St. Joan of Arc Masses

- 4pm Sat - 156 (19.9%)
- 8am Sun - 103 (13.1%)
- 10am Sun - 181 (23.1%)
- 12pm Sun - 71 (9.0%)
- 8:30am Daily - 11 (1.4%)

St. Peter Masses

- 9am Sun - 90 (11.5%)
- 11am Sun - 63 (8.0%)
- 1pm Sun Spanish - 77 (9.8%)
- 5pm Sun - 19 (2.4%)
- 6:30pm T/Th - 2 (0.3%)
- 7pm W/F - 3 (0.4%)

Other - 9 (1.1%)

Years at Parish

Years | # of Participants

1	33
2	30
3	32
4	33
5	31
6	19
7	27
8	24
9	14
10	46
11	10
12	30
13	15
14	17
15	24
16	11
17	27
18	27

Years | # of Participants

19	8
20	43
21	8
22	15
23	17
24	17
25	19
26	7
27	5
28	9
29	11
30	38
31	3
32	6
33	12
34	13
35	25
36	8

Years | # of Participants

37	17
38	6
39	4
40	24
41	1
42	5
43	1
44	1
45	6
46	4
47	3
48	1
49	1
50	7
51	0
52	1



C. Summary of Short Answer Feedback

A high-level summary of feedback received for each facility area rated is provided below:

- Sanctuary:
 - The Saint Peter Sanctuary needs improvements to the sound system, some maintenance upgrades, new kneeler padding, and a larger communion rail. ADA accessibility to the choir space is also recommended.
 - For the Sanctuary at Saint Joan of Arc recommendations included: upgrades to the sound system, and improvements to the beauty of the worship space including a larger crucifix, statues, more stained glass, larger stations of the cross, more central ADA seating, and the choir space and altar improvements.

- Adoration Chapel:
 - Saint Peter's Adoration Chapel is newly renovated but needs improvements made to the seating and kneelers in this space. Noise from the parking lot during busy times was also indicated as an issue.
 - The Adoration Chapel at Saint Joan requires a larger space, noise reduction from the Narthex, better lighting, and additional beautification to aid in worship.

- Church Offices:
 - Church offices are located at both parish campuses. The Saint Peter offices are combined in the McEwan Center and need an addition of bathrooms and a sink in the kitchen area. Saint Joan offices are throughout the building but should be centrally located and increased in size to include space for the staff.



-
- Bathrooms:
 - An increase in the number of bathrooms is an issue on both campuses. The Saint Joan building contains only one set of bathrooms and because of Diocesan guidelines is a limitation to having both adult and child programs running simultaneously. Bathrooms in the Saint Peter church are adequate but the McEwan Center needs more bathrooms and the current ones need to be upgraded.

 - Kitchen:
 - The kitchen at Saint Joan is too small for the events that are held in the space, especially for the Fish Fry. Saint Peter's two kitchen spaces are small but functional with some repairs needed.

 - McEwan Gym:
 - The gym in the Saint Peter McEwan Center is too small for community events for the parish. Improvements are needed to increase the utility of the space for athletics and gatherings.

 - Social Hall:
 - The Social Hall at Saint Joan of Arc is used as the main event space and it is too small for the current size of the parish. The sound system needs to be improved and the moveable walls make it challenging to hold multiple events at one time due to the excess noise in the space.

 - Storage Areas:
 - Storage area improvements were requested on both campuses.

 - Parking Lot:
 - Additional ADA parking spaces at Saint Joan of Arc were requested. Adding a crosswalk and better lighting for added safety are also needed. Exiting the parking area is challenging after Sunday Mass times.



-
- The parking lot at Saint Peter needs to have improved drainage and complete resurfacing. Added lighting and better lines are also required for safety.
 - ADA Accessibility:
 - Improvements to ADA accessibility are desired at both campuses. Added seating options, more parking spaces, bathroom size/shape, stall handle improvements, and choir area access are needed. Unlocking automatic doors and increasing door opening times are also required. Saint Joan's altar space is currently not accessible.
 - Room Availability:
 - During child faith formation classes, there is very limited room availability. During other times of the week, the ministries have the added challenge of finding space for meetings. Additional rooms are needed to enable ministries to meet and grow.
 - Room Size:
 - The size of meeting rooms and classrooms at Saint Peter is generally sufficient for the current needs. Meeting space at Saint Joan is limited to the Social Hall or classrooms. The classrooms do not offer the space or privacy needed for many ministries.
 - Room Furniture and Technology:
 - Concerns were raised about the Furniture and Technology in the meeting rooms and classrooms on both campuses.



D. Facility Limitation List

- Lack of Space
- Facility Upgrades Needed
- Need space for Community Building Opportunities
- Need Better Social Spaces
- Need Improved Worship Spaces
- Size and Availability of Meeting Rooms
- Lack of Space for Youth Engagement
- Need Confessionals and Increased space for Mass
- Need space for more Faith Formation Opportunities
- Need a Catholic School
- Need Improved Music Spaces
- Lack of Athletics Options
- Need Increased Safety/Security - Camera, Door access, etc.
- Need improvements to ADA accessibility
- Increased number of restrooms
- Underutilized Outdoor spaces
- Lack of adequate Storage



E. Additional Projects & Feedback

Given the ability to share “write-in” options and share feedback, participants suggested a variety of great ideas and comments. Each comment was recorded and categorized as large capital projects, renovation projects, improvement projects, or programming projects and ideas. The categorized projects are listed below.

Comments pertaining to the facilities have been forwarded to the Committee for consideration in shaping strategic plans. While remarks regarding programming and other ideas fall outside the Capital Campaign's scope, they are integral to parish life. Thus, such comments and ideas have been relayed to the pastor and, as necessary, to parish staff. Each list is ordered with the most commonly mentioned projects at the top.

Large Capital Project Ideas
K-8 School & Preschool
Very Large Event Center (1000+)
More Bathrooms (including handicapped/family)
Saint Peter Parking Lot
Increased Kitchen Space
Increased Sanctuary Seating
Full Court Gym (floor surface/lines)
Saint Peter's Outdoor space to gather (playground, shelter house, fire pit, etc.)
Rectory
Sidewalks/Walking Path
Community Garden/Rosary Garden
Convent
Saint Peter Grotto
A new church
Saint Joan outdoor picnic/playground

Renovation and Maintenance Project Ideas
Bigger/More Meeting Spaces
More/Better Confessionals
Saint Joan Choir Space
Improved Offices
Reconfigure current spaces
Saint Joan Roof
Saint Peter/McEwan HVAC
Saint Joan HVAC
McEwan Center elevator
Saint Peter Choir area improvements

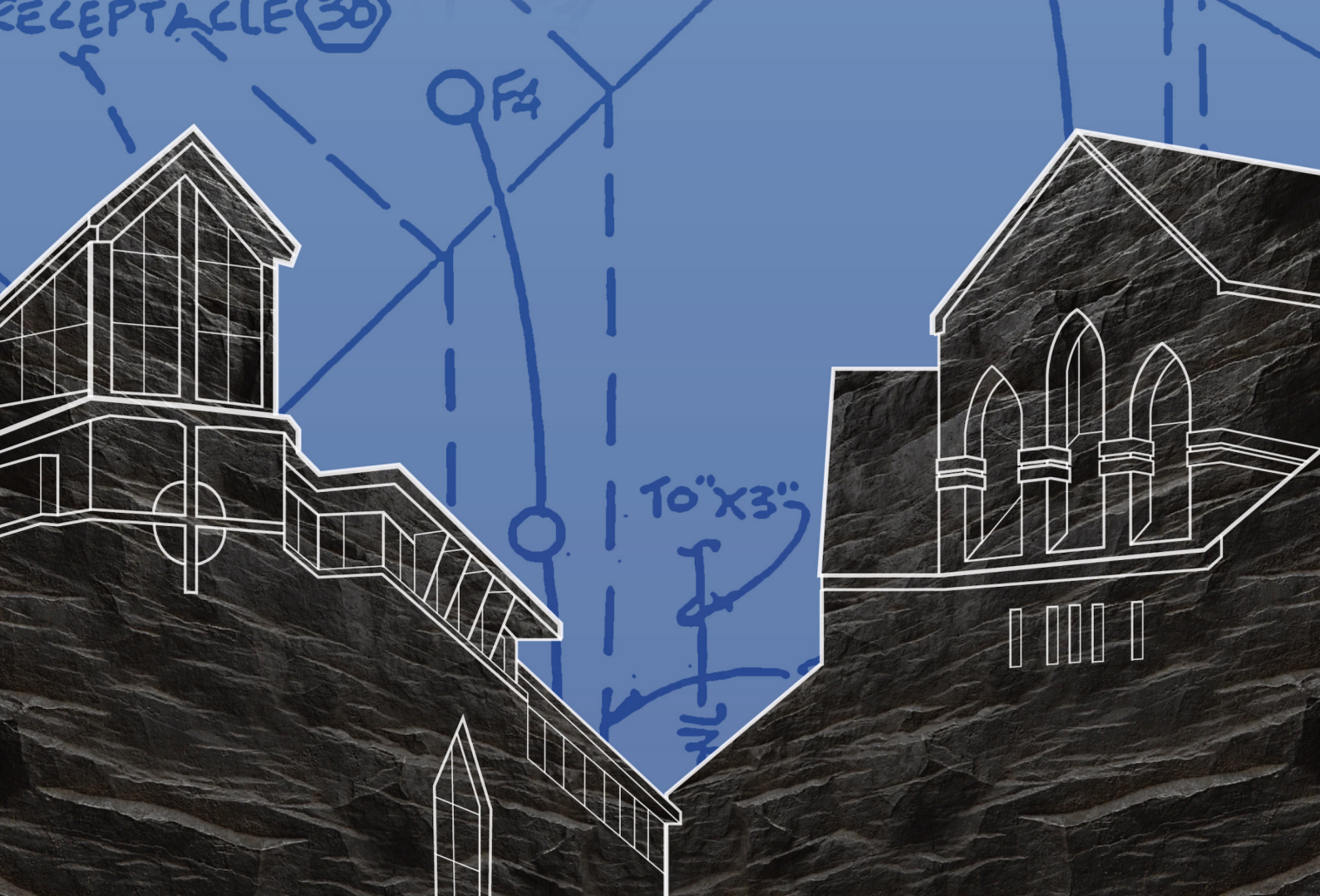


Improvement Projects		
Project	Project	Project
Saint Joan Sound System/ Saint Peter Audio	Communion Kneeler/Altar Rail	Saint Peter Kneeler Padding
Sanctuary Beautification	Front Row Wheelchair Access	More Handicap parking
Saint Joan Classroom Improvements	Entrance Gathering Space Improvements	Saint Joan sound/acoustics (noise carries from Gathering Space)
Dedicated Youth Space	Security/Separation	Social Hall Sound/McEwan Gym Sound
General upgrades (paint, furniture, etc.)	Landscaping improvements	Saint Joan crucifix
Saint Joan Adoration Chapel improvements	Screens in Sanctuary	Crosswalks in Parking Lot
Handicap entrance/door improvements	More windows in Saint Joan's sanctuary	Quiet reading/praying room
Digital sign at Smoky Row/Saint Peter sign at road	Saint Joan Stations of the Cross	Saint Joan Ambo changes
Homily recording/printed homily	Adult Education Room	New space for the CERS community
Nursery/Childcare expansion/improvements	Better maintenance	Cry room temperature control
Meeting room with "home" feel	Saint Joan's natural lighting improvements	Altar coverings
Improved walkway to church (sidewalk from side doors) cover to parking	Saint Peter Adoration Chapel chair replacement	Choir area ADA accessible
Holiday seating	Visible Welcome Desk	Dedicated area for nursing mothers
Parking Lot lighting	Saint Peter HVAC	Sensory-friendly seating
Pipe organ	Garbage Disposal	Food Pantry Storage
Added technology	Electric Charging	Dedicated Knights meeting room
CGS Atrium Improvements	Larger/additional quiet room	Comfortable seating for seniors
Replace folding PSR walls (poor acoustics)	Non-round tables	Video conferencing options (TV checkout)
Parking Entrance/Exit	Garage storage area	Saint Peter Dishwasher
Improved Saint Joan Storage Spaces	Bike Rack in the parking lot	Increase size of the vestment closet
Chairs in Gathering Space	New chairs	More candle-lighting areas
Social Hall Lighting	Outdoor Stations of the Cross	Saint Joan ventilation
Saint Peter Adoration Chapel crucifix	Noise reduction in Saint Peter Adoration Chapel	Remove candles from Gathering Space (Saint Peter)
Building Access Improvements		



Parish Programming and Other Comments	
Project/Idea	Project/Idea
More Mass/Confession Times	Community outreach/volunteer opportunities
Music	Girls High School
More social opportunities	Home for widowed/elderly parishioners
PSR Improvements	Alpha, The Rescue Project, Cursillo, retreats, JPll Healing Retreats, Alpha Marriage
More Faith Formation Opportunities	Social events at both campuses
Young Adult Group	More sacrament resources, contacts, and information
Youth Ministry	Group for preschool moms
Children's choir	New clergy vestments (Saint Joan)
Overflow for holidays	Better holiday decorations (Saint Joan)
Access for Parishioner Scheduling Spaces	Sensory area
Missals/Songbooks	Parish Mission
Athletic teams	A place for brides to dress
SPSJOA and Spanish/English Community Building	More women's ministry
Communications/bulletin difficult to read	Children's nursery
Less incense use	PSR Summer Program
Website update	Encourage Catholic Schools
Adult education (English, Spanish, History, Geography, Entrepreneurship, etc.)	Speakers/Damascus/classes
AHG/Trail Life/Girl Scout/Boy Scout troops	Registration app on the website
Job Outreach/Vocational/Arts School	Lectors sit on the altar
Creativity room	Communication on Rosary/Chaplet/etc.
Elder community options	Livestream Mass
Sheriff to direct traffic after weekend Masses	Expanded office hours
Family Promise program	





ST PETER ST JOAN OF ARC

Expanding the Foundation

THANK YOU FOR YOUR PARTICIPATION!